



# INDOFINE Chemical Company, Inc.

121 Stryker Lane, Bldg. 30, Suite 1 • Hillsborough, NJ 08844 • U.S.A.

Phone: (908) 359-6778 • FAX: (908) 359-1179

website: [www.indofinechemical.com](http://www.indofinechemical.com)

e-mail: [chemical@indofinechemical.com](mailto:chemical@indofinechemical.com)

## CERTIFICATE OF ANALYSIS

Catalog Number: 021326S

Product Name: **5,6,7,3',4'-PENTAMETHOXYFLAVONE with HPLC**  
(Sinensetin)

CAS Number: [2306-27-6]

Lot Number: 1611923

Chemical Formula: C<sub>20</sub>H<sub>20</sub>O<sub>7</sub>

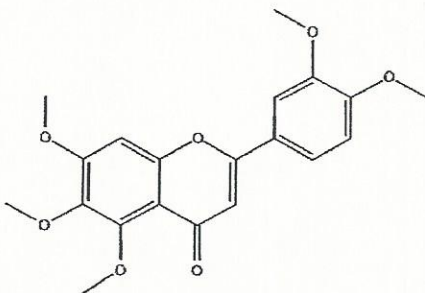
Molecular Weight: 372.38

Appearance: Light yellowish-brown powder

Loss on Drying: 1.5%

Storage: Store in a cool, dry place

Purity(HPLC): 98.89%





# INDOFINE Chemical Company, Inc.

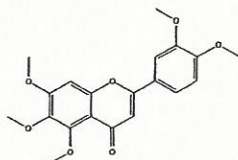
121 Stryker Lane, Bldg. 30, Suite 1 • Hillsborough, NJ 08844 • U.S.A.

Phone: (908) 359-6778 • FAX: (908) 359-1179

website: [www.indofinechemical.com](http://www.indofinechemical.com)

e-mail: [chemical@indofinechemical.com](mailto:chemical@indofinechemical.com)

## HPLC ANALYSIS

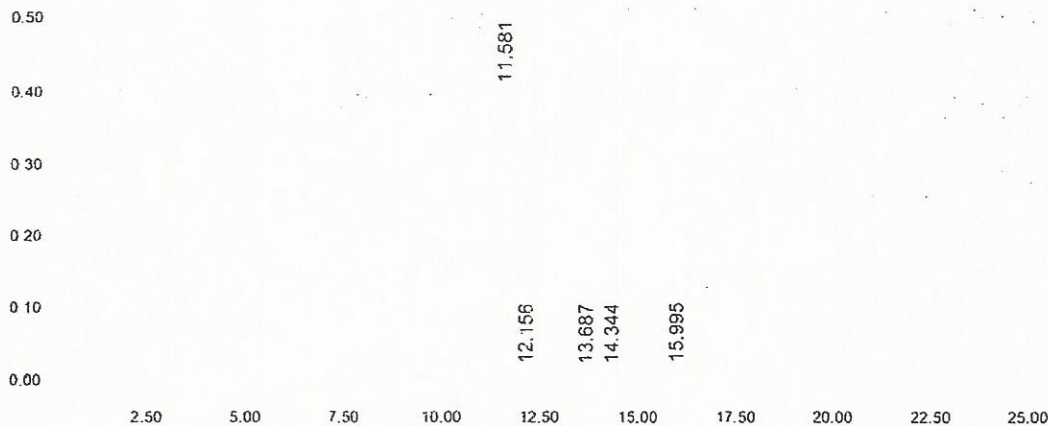


Catalog No.: 021326S  
Product Name: Sinensetin  
Lot No.: 1611923

### SAMPLE INFORMATION

Sample Name:	Sinensetin	Acquired By:	System
Sample Type:	Unknown	Sample Set Name:	
Vial:	1:F.2	Acq. Method Set:	Sinensetin
Injection #:	1	Processing Method:	Samples
Injection Volume:	10.00 ul	Channel Name:	330.0nm
Run Time:	25.0 Minutes	Proc. Chnl. Descr.:	PDA 330.0 nm

Auto-Scaled Chromatogram



### Peak Results

RT	Area	% Area	USP Plate Count	USP Resolution
1 11.581	4772705	98.89	36371.85	
2 12.156	9353	0.19		
3 13.687	3240	0.07	58792.98	
4 14.344	11788	0.24	41470.97	2.50
5 15.995	29139	0.60	50933.12	5.69